

DIMENSION OF LONGEST SIDE, INCHES	SHEET METAL GAGE (ALL FOUR SIDES)	TRANSVERSE REINFORCING (1)	
		MINIMUM REINFORCING ANGLE SIZE AND MAXIMUM LONGITUDINAL SPACING BETWEEN TRANSVERSE JOINTS &/OR INTERMEDIATE REINFORCING	AT JOINTS
UP THRU 12	26	NONE REQUIRED	26 26
13 - 18	24	NONE REQUIRED	24 24
19 - 30	24	1"x1"x1/8" @ 60 IN	- 24

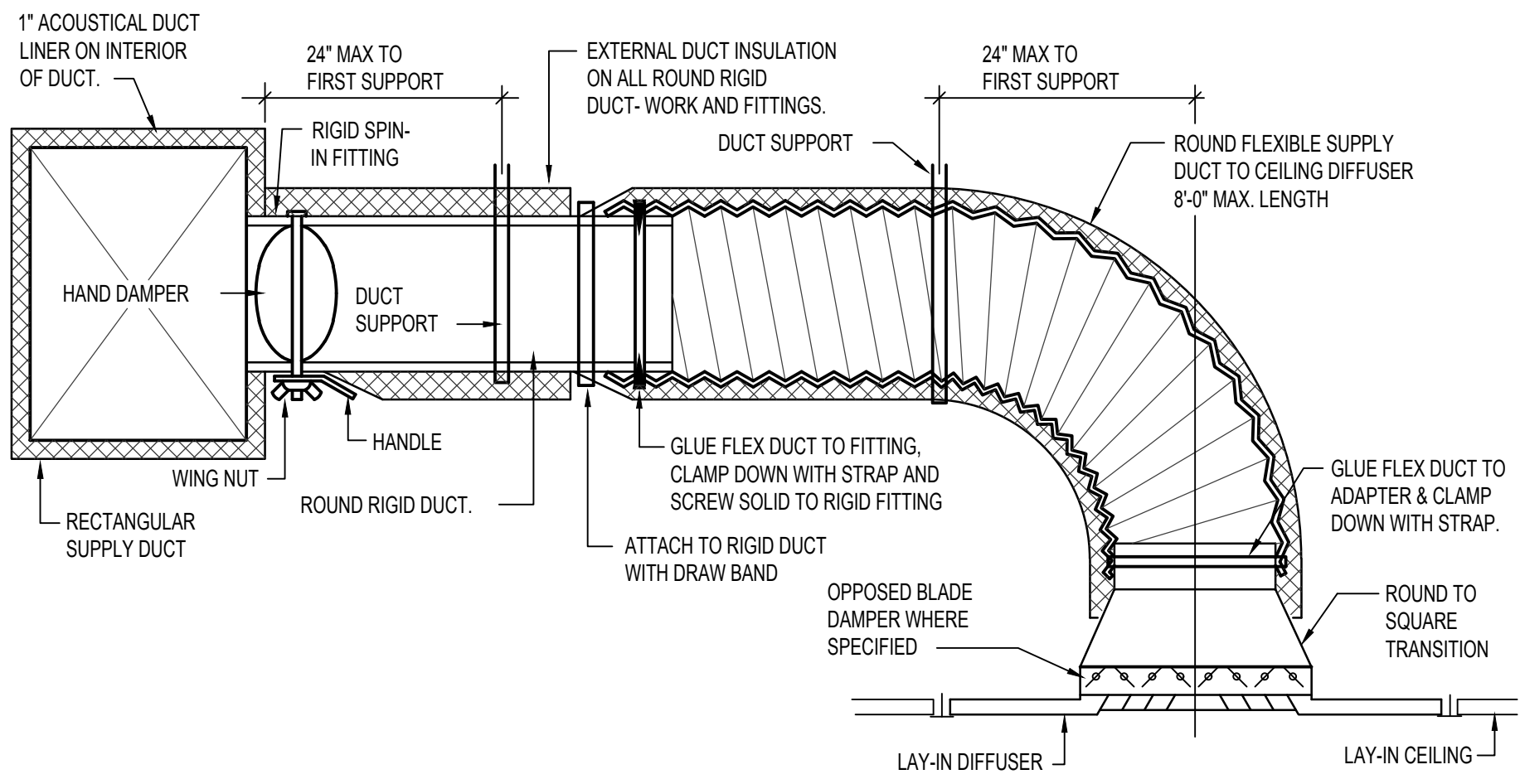
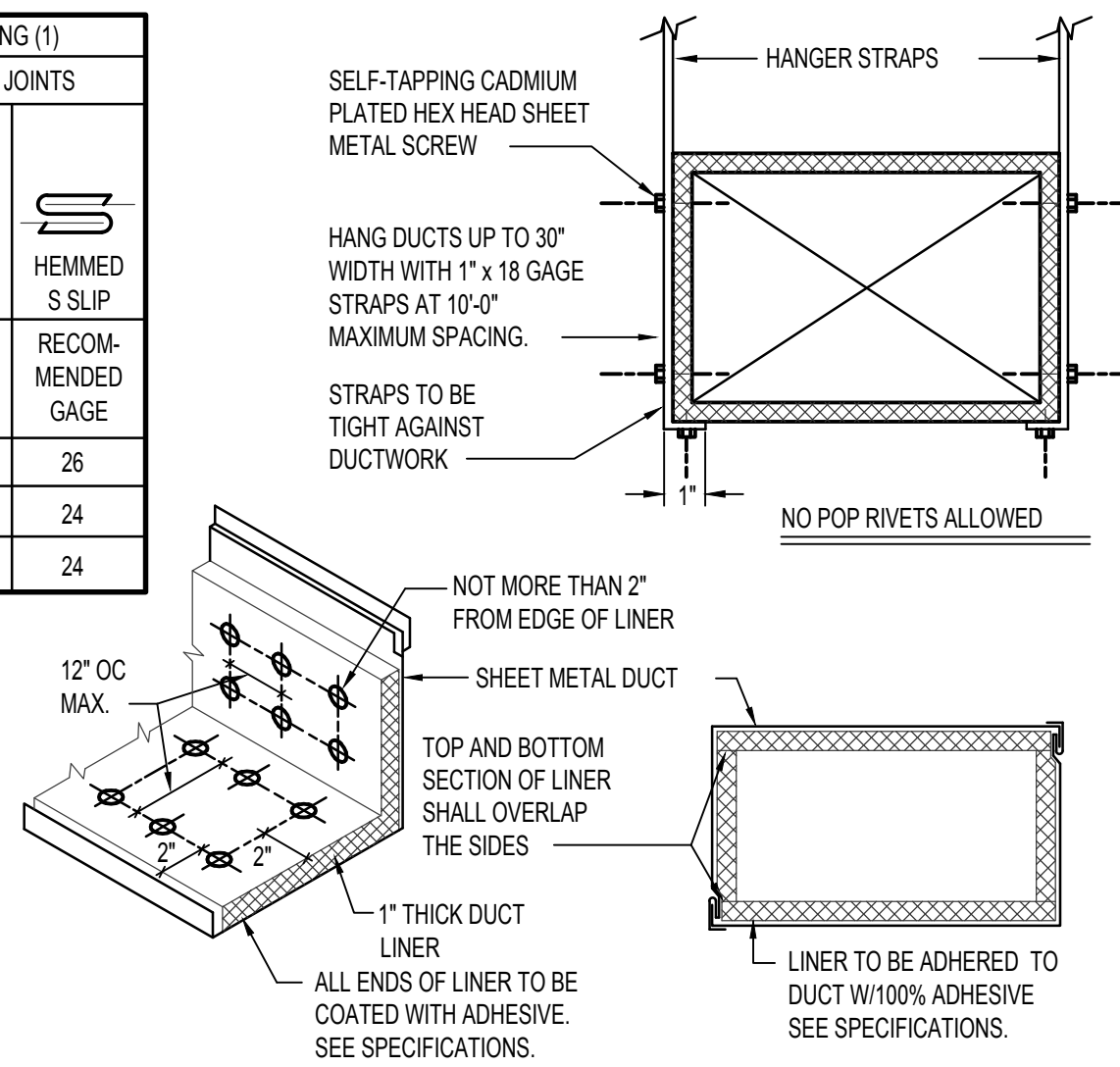
(1) TRANSVERSE REINFORCING SIZE IS DETERMINED BY DIMENSION OF SIDE TO WHICH ANGLE IS APPLIED.

METAL FASTENERS - O-MARK INSULPINS, DURO DYNE FASTENERS OR GRIPNAILS.

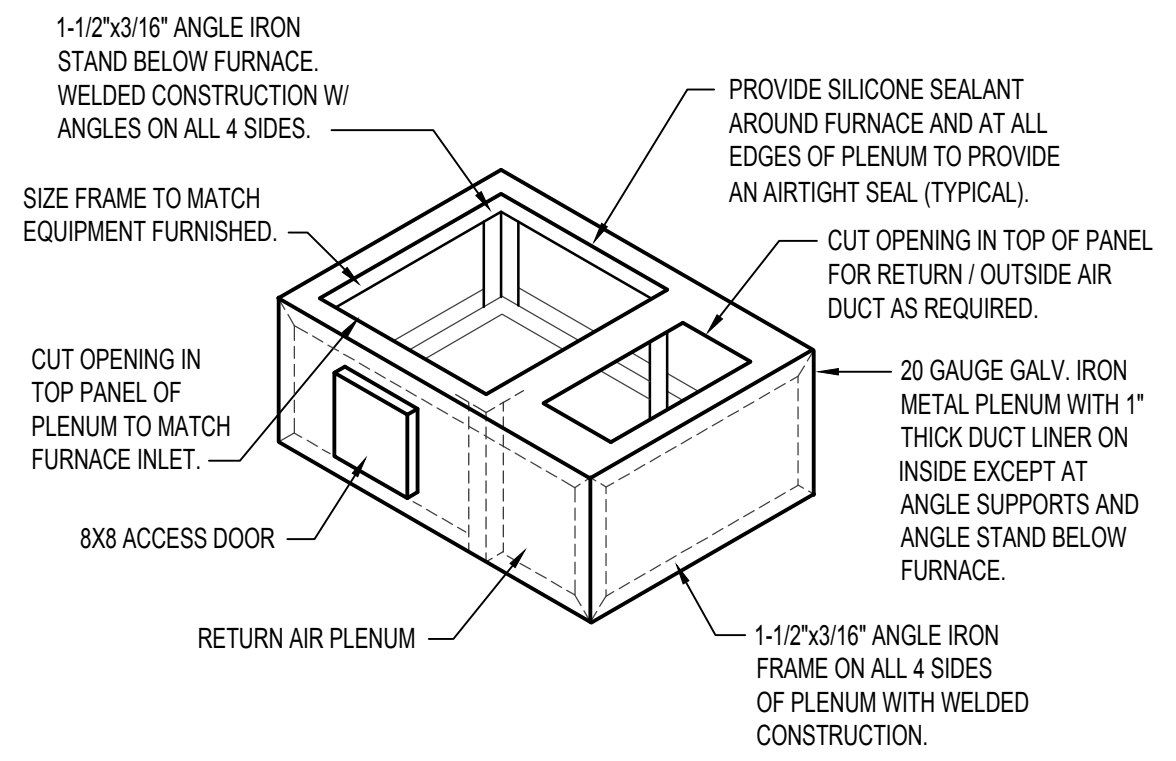
GRIP NAILS SHALL BE INSTALLED BY GRIPNAIL AIR HAMMER OR BY AUTOMATIC FASTENER EQUIP.

ENDS OF LINER SHALL BE BUTTED FIRMLY TOGETHER

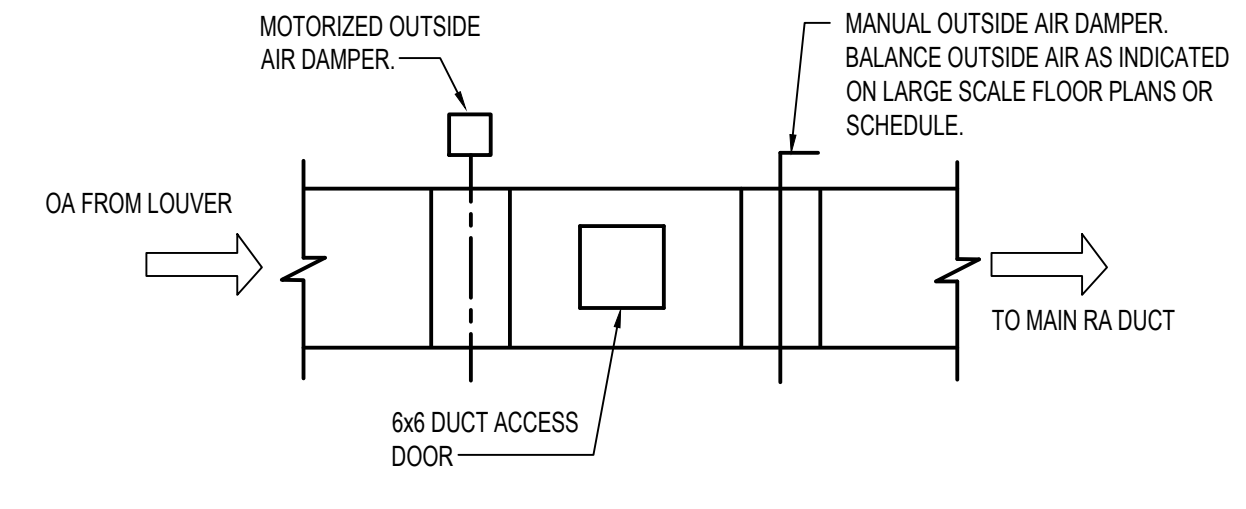
DUCT CONSTRUCTION AND HANGER DETAIL
NO SCALE



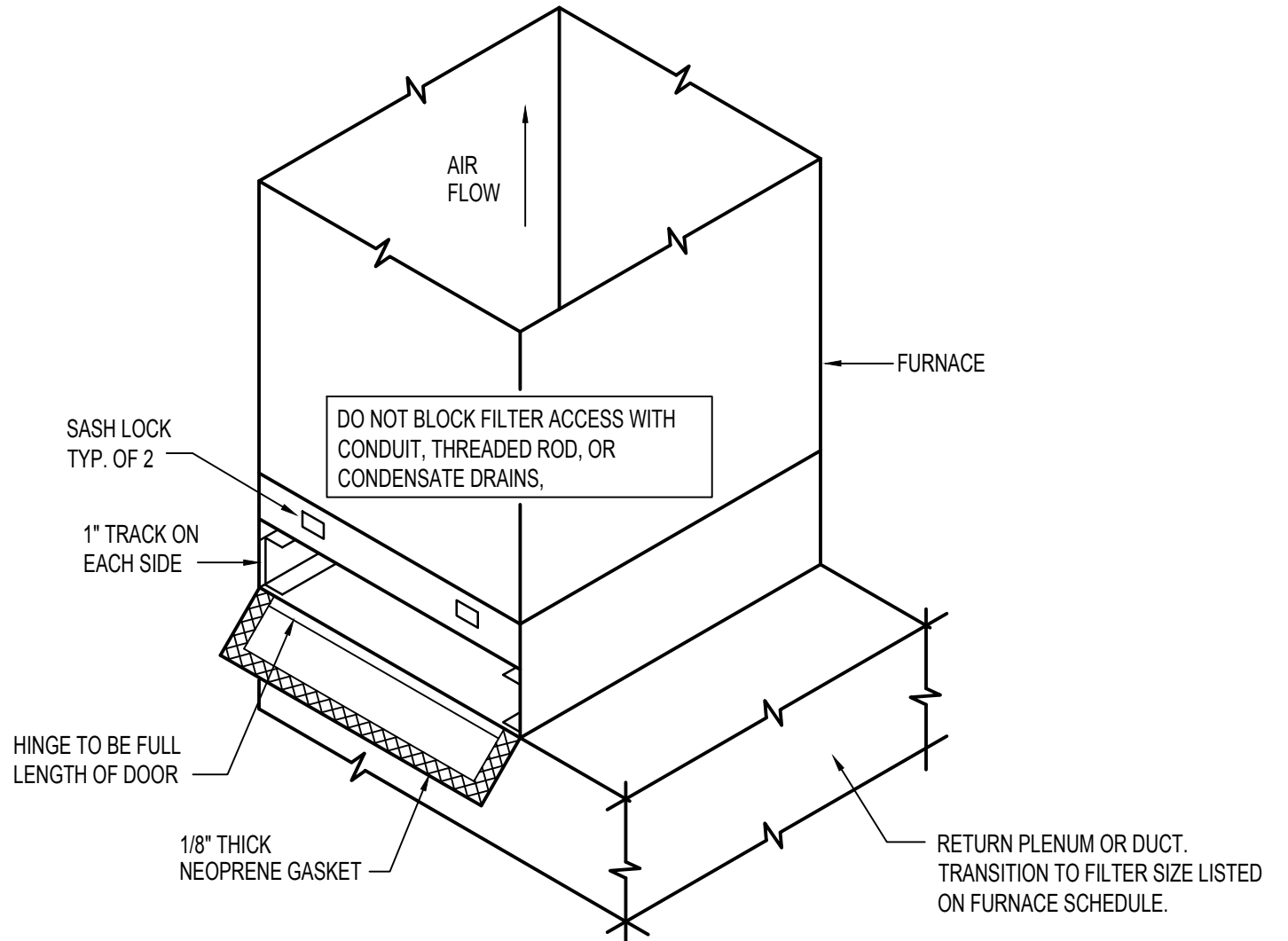
CEILING DIFFUSER DETAIL WITH FLEXIBLE DUCT
NO SCALE



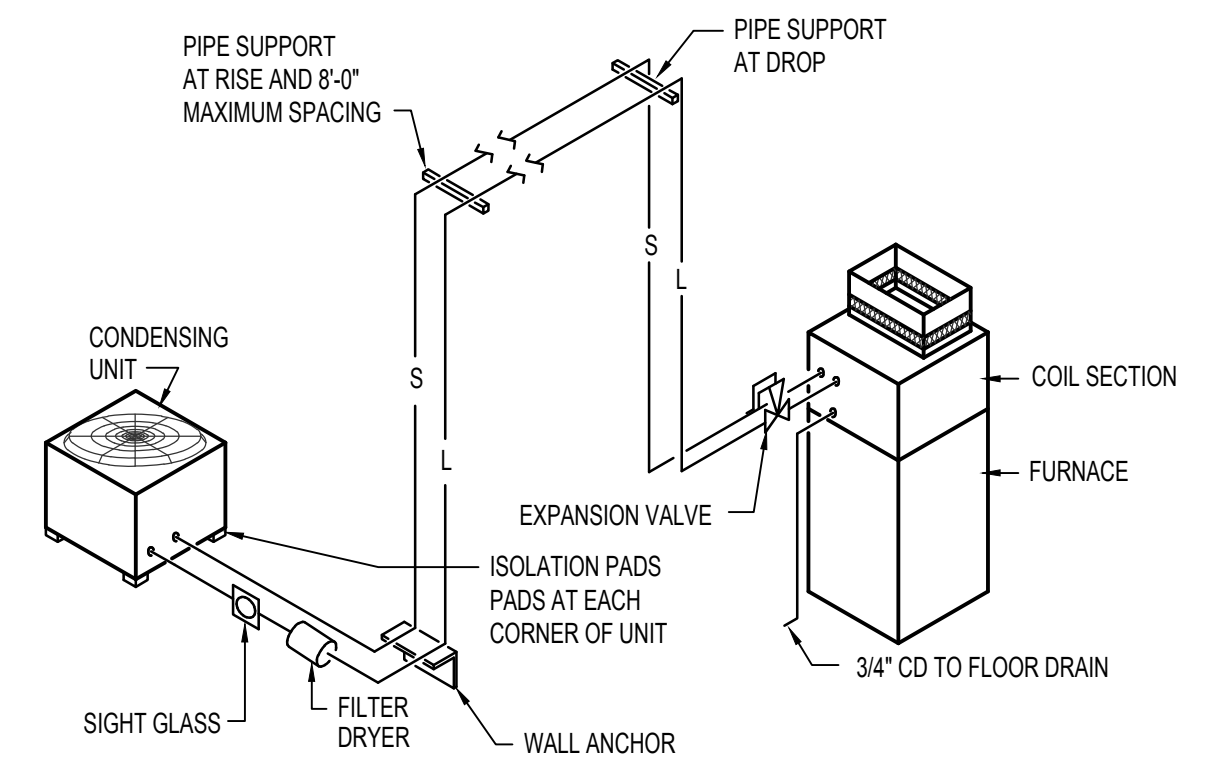
RETURN AIR PLENUM DETAIL
NO SCALE



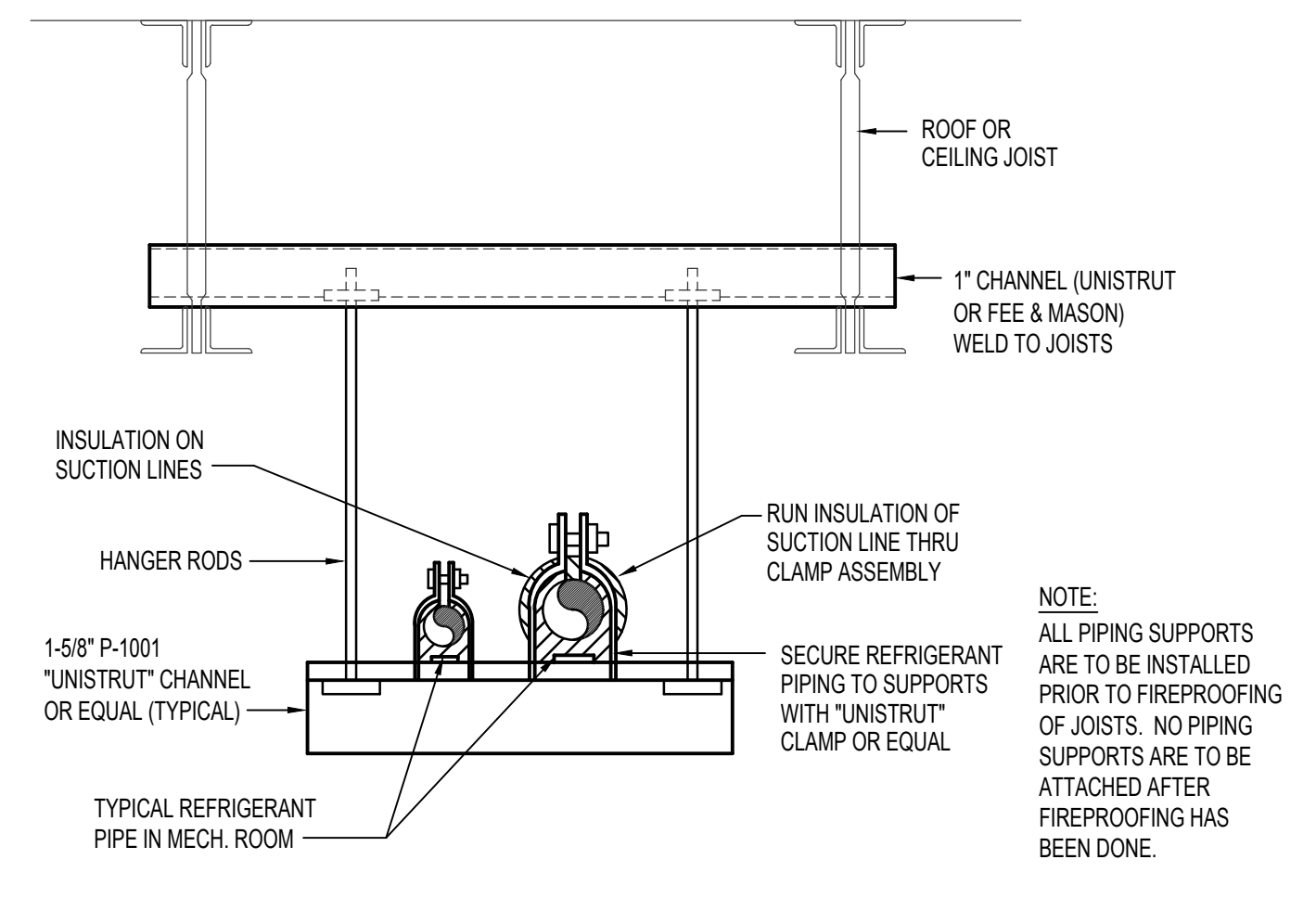
TYPICAL OUTSIDE AIR DUCT DETAIL
NO SCALE



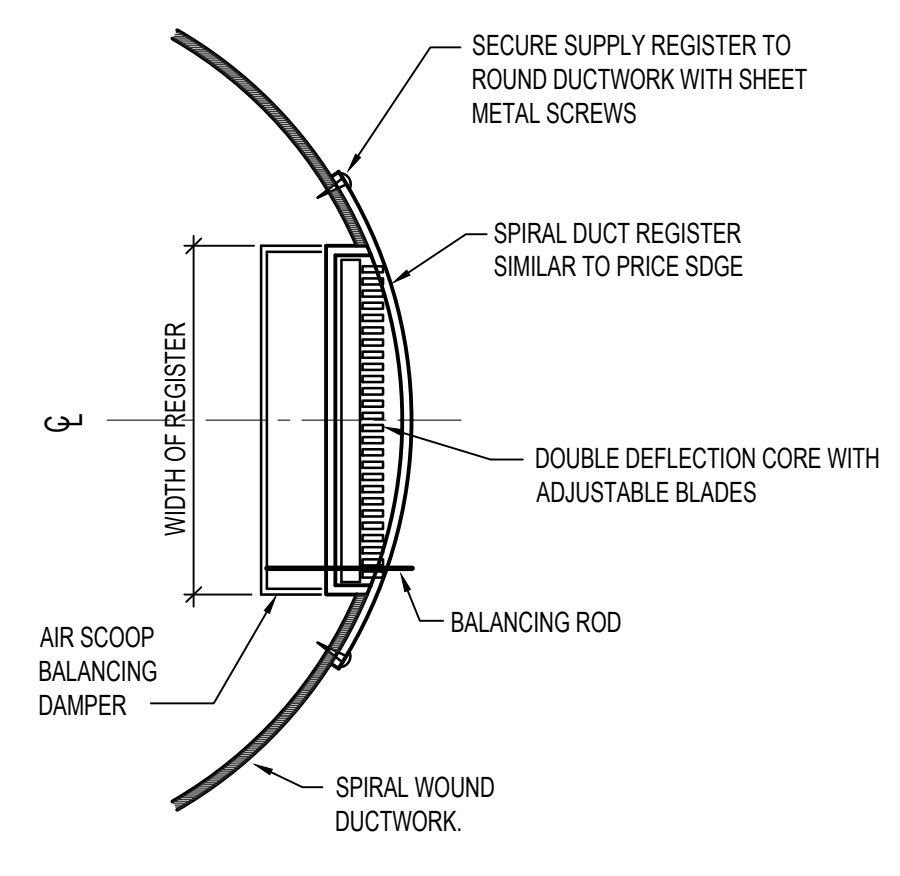
EXTERNAL FILTER SECTION DETAIL
NO SCALE UP-FLOW CONFIGURATION



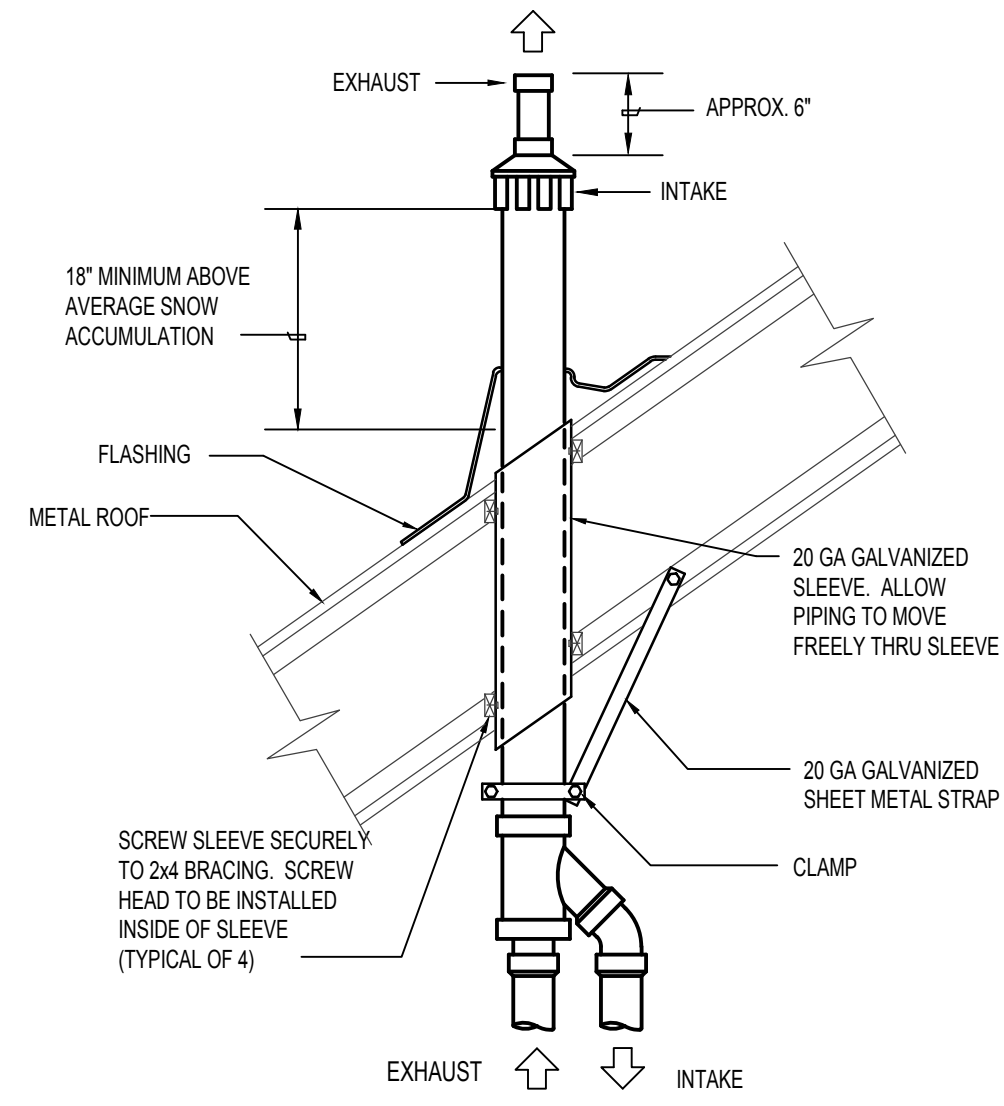
REFRIGERANT PIPING DIAGRAM
NO SCALE (5 TON AND SMALLER)



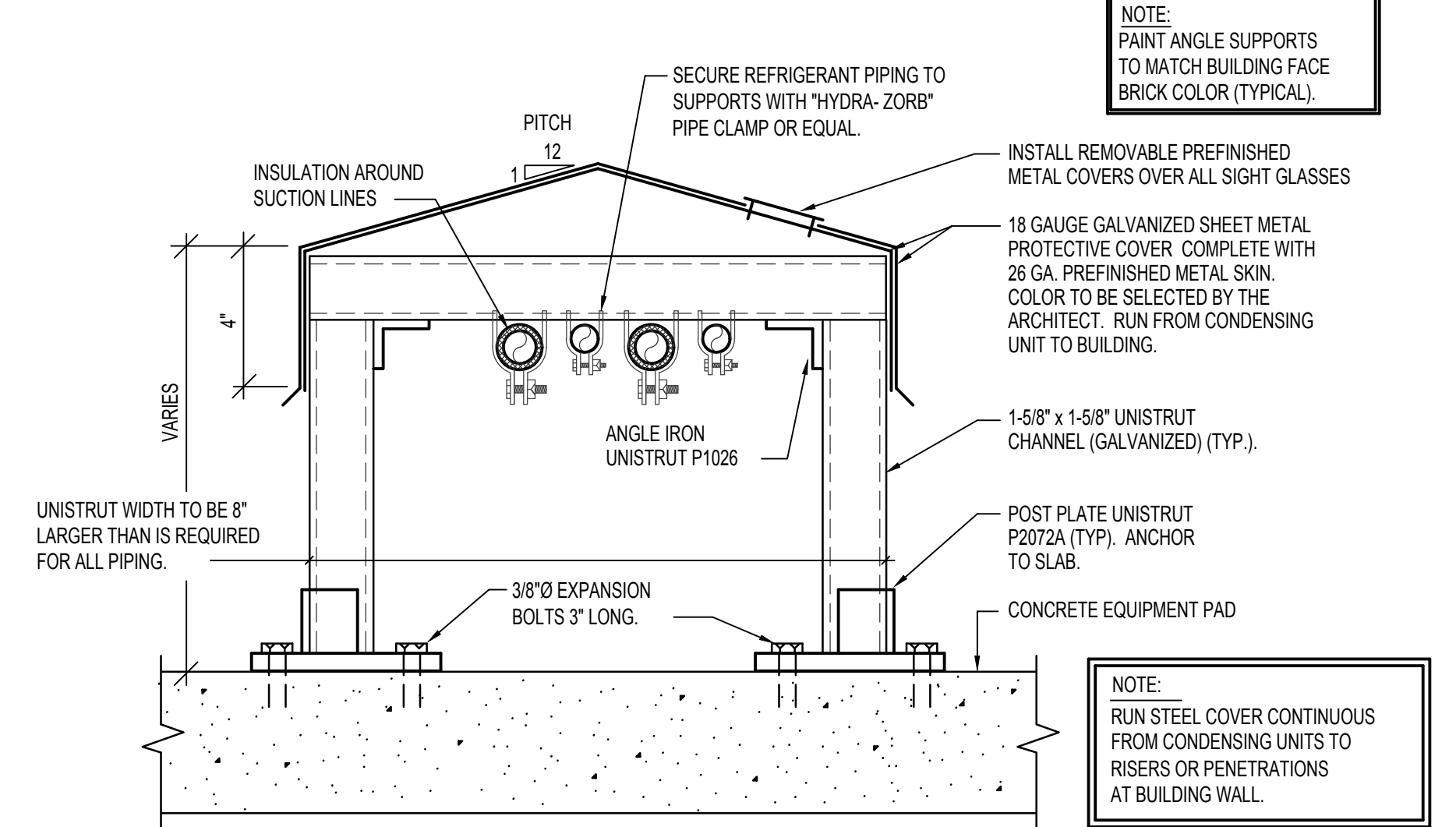
REFRIGERANT PIPE SUPPORT DETAIL
NO SCALE



REGISTER INSTALLATION DETAIL
NO SCALE



CONCENTRIC VENT TERMINATION DETAIL
NO SCALE



REFRIGERANT PIPE SUPPORT DETAIL
NO SCALE

Engineered Systems Associates
1355 EAST CENTER
POCATELLO, IDAHO 83201
PHONE: (208) 233-0501
FAX: (208) 233-0529
EMAIL: esa@engsystems.com
ESA JOB NUMBER: 20085

Professional Engineer Registered
MAYHE C. SUDWICKS
STATE OF IDAHO
Dec 07, 2020

LICENSED ARCHITECT AR-2650
MARLA R. MORGAN
STATE OF IDAHO

m architect PLLC
MARLA MORGAN, Architect
Ph: 208.270.2244
E-MAIL: morganmrm@coblone.net

OWNER: William Clayson
Wolverine Rocks & Rubber
New Office and Warehouse Building
6030 S. Yellowstone Hwy Idaho Falls, Idaho 83402

SHEET CONTENTS
MECHANICAL DETAILS

REVISIONS	DATE	DESCRIPTION

SHEET NUMBER
M-3 OF 3